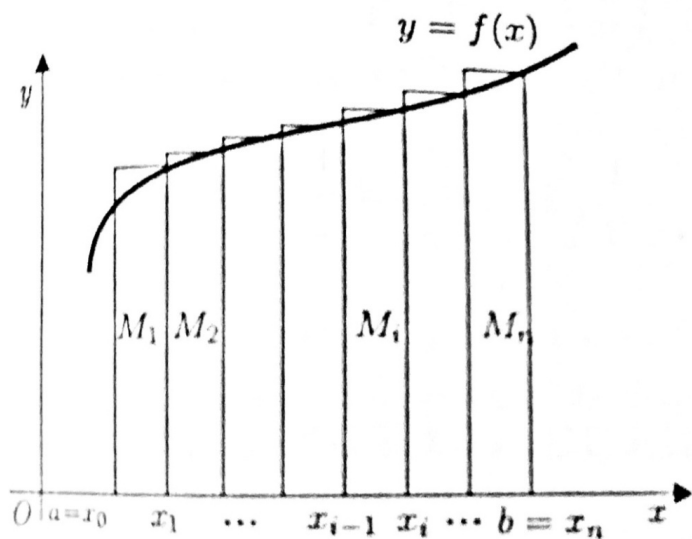


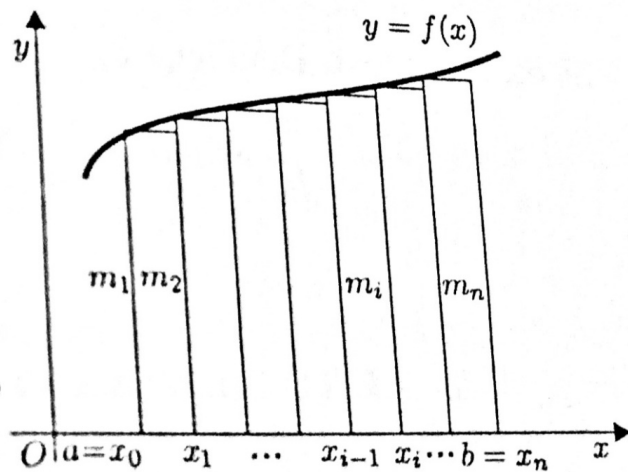
$$S = M_1 \Delta x_1 + M_2 \Delta x_2 + \dots + M_n \Delta x_n = \sum_{i=1}^n M_i \Delta x_i$$

nazivaju se redom donjom i gornjom Darbuovom sumom funkcije $f(x)$ za datu podelu segmenta $[a, b]$.

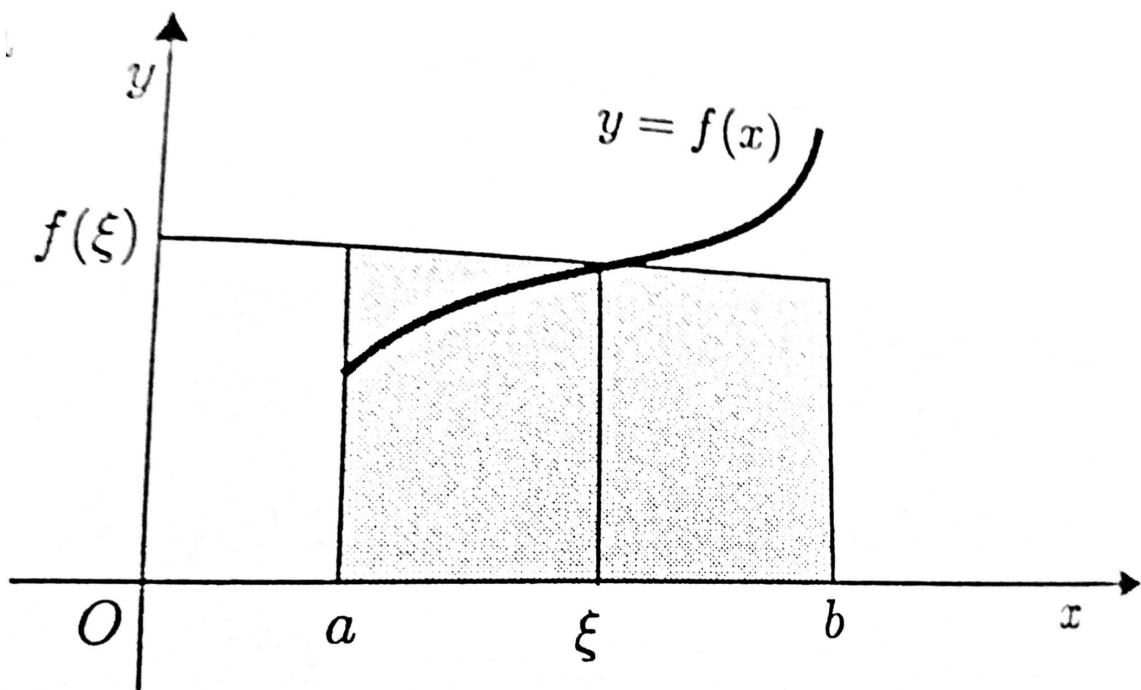
Geometrijska interpretacija Darbuovih suma data je na sl. 2 i sl. 3.



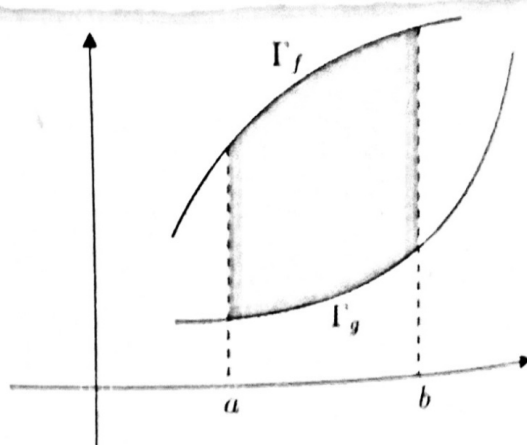
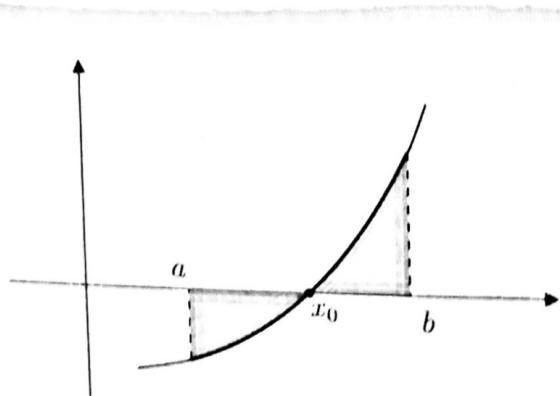
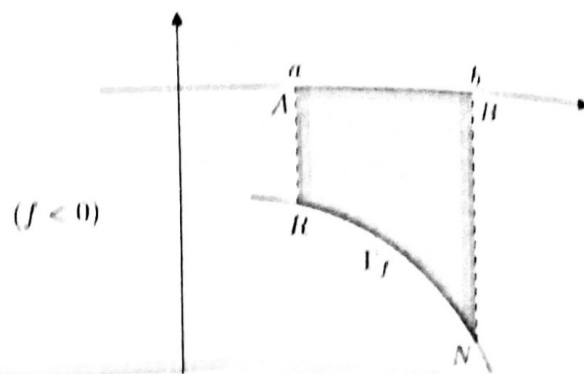
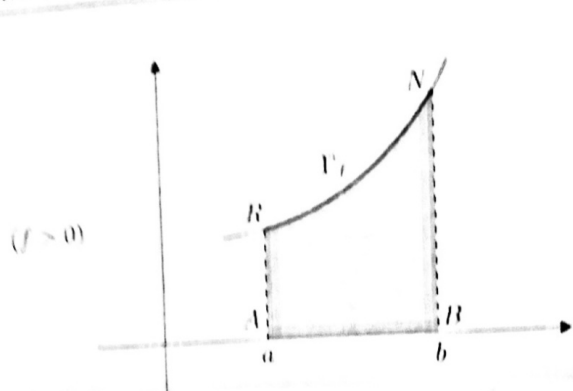
Sl. 2 Gornja Darbuova suma

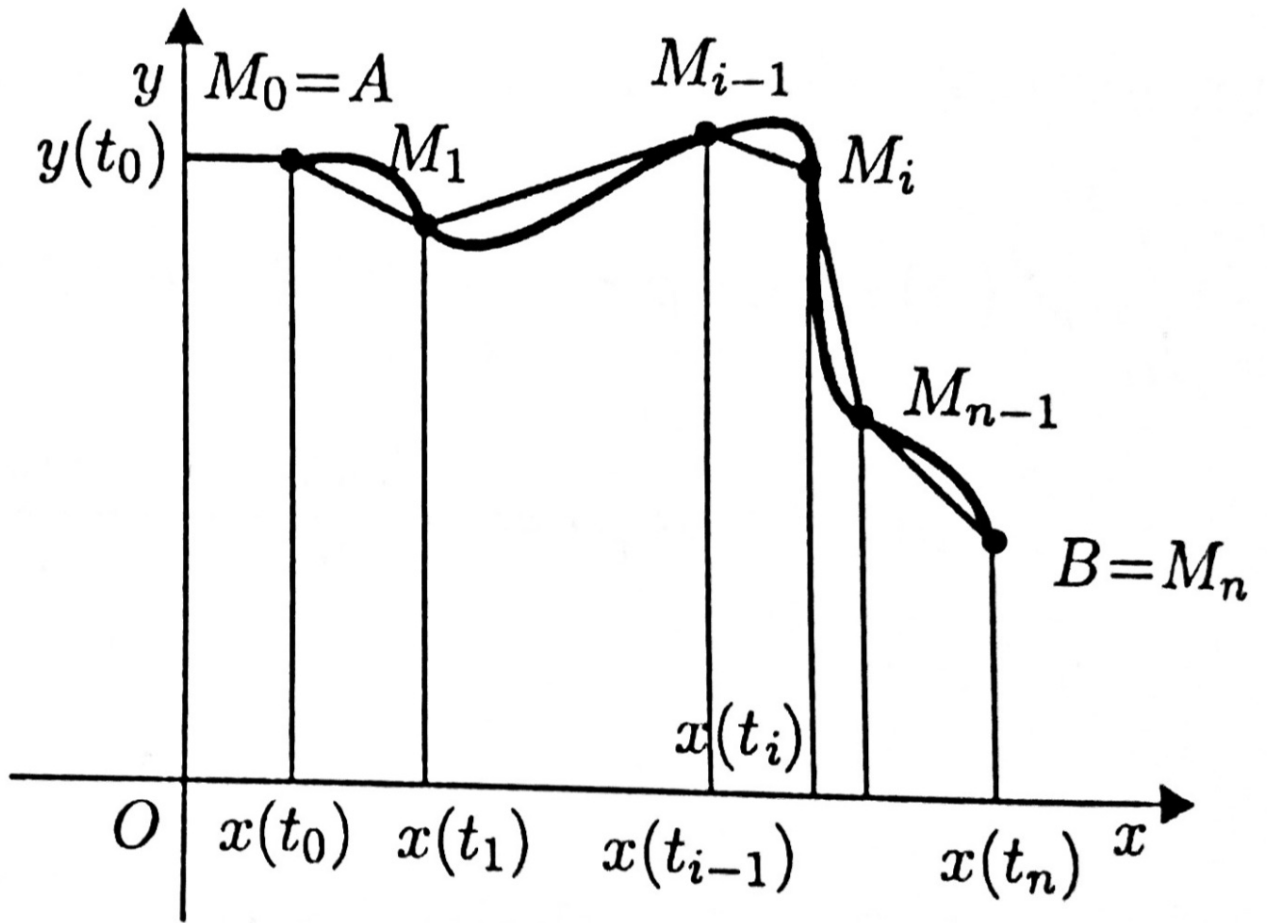


Sl. 3 Donja Darbuova suma



Sl. 5





Sl. 27